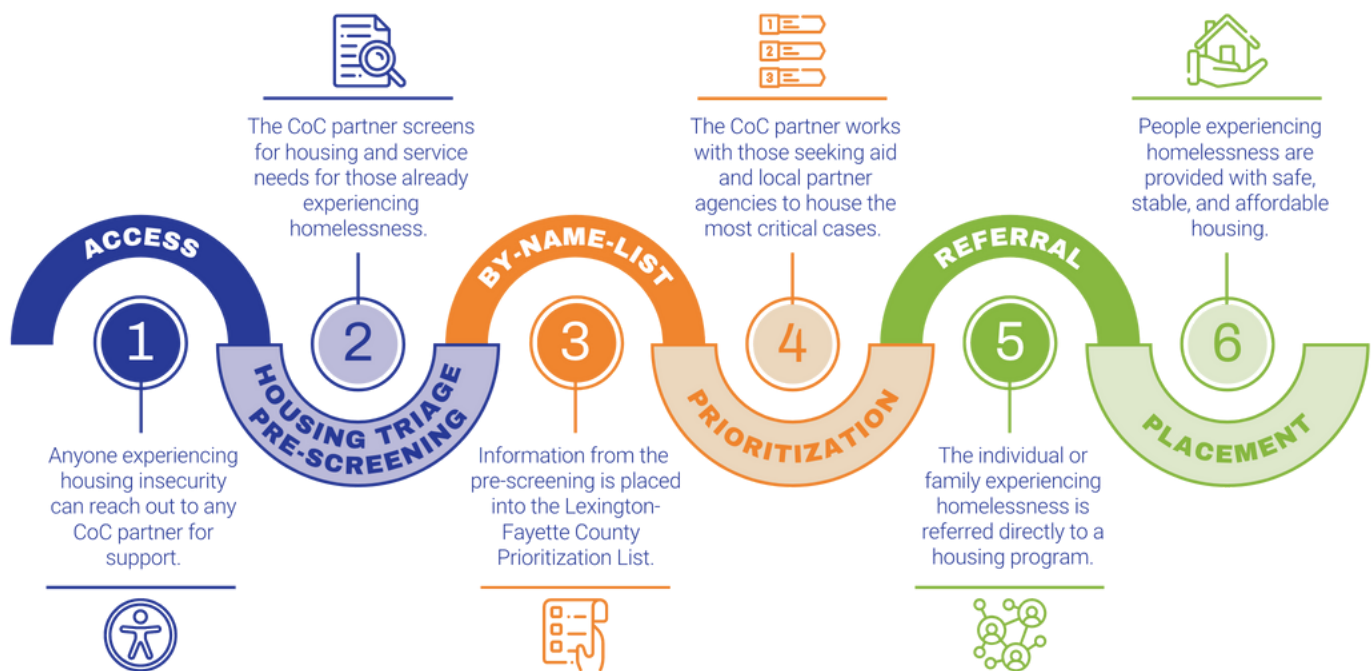


The Basics of the Lex End Homelessness Housing Triage System

The U.S. Department of Housing and Urban Development (HUD) requires that each Continuum of Care (CoC) create a comprehensive crisis response system for people most in need of help. This means that all of Fayette County's 70+ Lex End Homelessness partners work together with a goal that everyone gets access to housing.

An important part of our crisis response system is the Housing Triage System. This process has six steps. It makes sure that being placed in housing isn't a matter of talking to the right case manager, at the right agency, at the right time. The process moves Lexington-Fayette County providers to say "Now that you are here, let's determine, together, what might be your next step."



The Housing Triage System targets housing and supportive services to:

- ✓ divert people away from the system who can solve their own homelessness;
- ✓ move people quickly from the street into permanent housing;
- ✓ support a defined role for emergency shelters and transitional housing;
- ✓ create an environment in which case managers can target their efforts;
- ✓ end homelessness across Lexington-Fayette County, versus program by program.

To explore data that shows the positive impacts of this process, visit our [data dashboard](#) with up to date information about homelessness in the Lexington community. You can also read the full [Housing Triage Manual](#) on our website.